

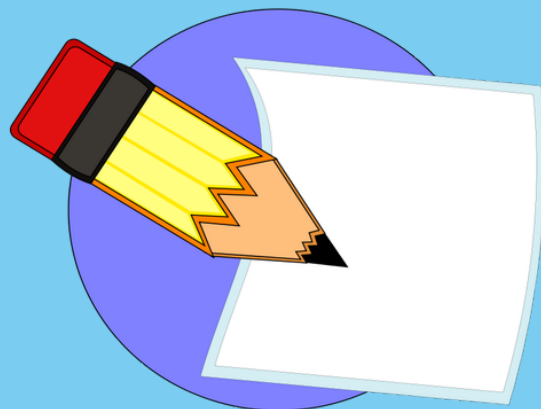
FINDING A SKILLED NURSING FACILITY DURING COVID

When Being Discharged from a Hospital

DO YOUR HOMEWORK

The California Department of Public Health has publicly accessible information on facility compliance histories. Check out their history first before making your decision.

Go to <https://www.cdph.ca.gov/Programs/CHCQ/LCP/CalHealthFind/Pages/Home.aspx> or call (916) 558-1784 for telephonic support.



COST CONSIDERATIONS



If you want Medicare or Medi-Cal to help pay for the nursing home care, you must select a facility that is certified by these programs. Due to the extremely high cost of nursing home care – which averages well above \$200 per day – few people can afford to pay privately for very long. Most California nursing homes participate in both Medicare and Medi-Cal.

LOCATION LOCATION LOCATION

People do better when their loved ones visit. During COVID, not all facilities allow visitors, but COVID free facilities can and do. Pick one close to your loved ones so they can visit inside, outside or through a window. But more eyes on you can mean better care and quicker healing!



COVID QUESTIONS

Before selecting a facility, CALL and ask the social worker or admission coordinator the following questions:

Have you reported any COVID cases among residents and/or staff?

Do you have a program for testing residents and staff?

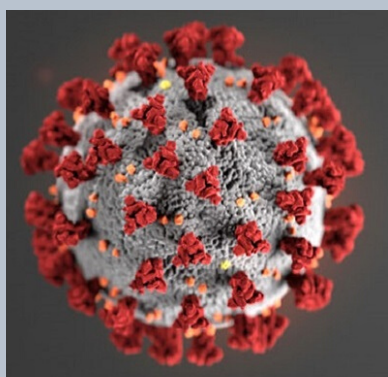
Are you doing it? What are your results?

If COVID positive, where are they put?

Are they separate?

Do they have separate staff?

What is your family visitation policy?



FOR MORE DETAILED INFORMATION, VISIT CALIFORNIA ADVOCATES FOR NURSING HOME REFORM AT:

http://canhr.org/factsheets/nh_fs/html/fs_howtochoose.htm