



# ELDER JUSTICE

## LUNCH & LEARN

AWARENESS, PREVENTION & INNOVATION IN THE AGE OF COVID-19

The logo for "ELDER JUSTICE LUNCH & LEARN" features a stylized sunburst of colorful lines above the text. The words "ELDER JUSTICE" are in a large, bold, black sans-serif font, and "LUNCH & LEARN" is in a smaller, black sans-serif font below it.

# ELDER JUSTICE

LUNCH & LEARN



**Nicole Howell** (Facilitator)  
Executive Director  
Empowered Aging

## Welcome & Introductions



# YOUR TOOLBOX...



Type in your question or comment



Connect with speakers and other participants using the chat



# CLOSED CAPTIONING IS AVAILABLE



Enable captions by selecting the icon on your toolbar



ASL available via Zoom video feed



The logo features a stylized sunburst composed of several vertical lines of varying heights and colors (orange, teal, grey, yellow) above the text.

# ELDER JUSTICE

LUNCH & LEARN

Mark your calendars for the **third Thursday of every month** through July 2022!

Each session is scheduled from **12 to 1 PM** PST.





**ELDER JUSTICE**  
LUNCH & LEARN

**SPONSORS**



**KAISER  
PERMANENTE**



**ARCHSTONE  
FOUNDATION**



**JOHN MUIR  
HEALTH**

**Planning Partners**





**ELDER JUSTICE**  
LUNCH & LEARN



**Joy Solomon, Esq.**

Director and Managing Attorney  
The Weinberg Center

## Emergency Housing and Shelter Needs for Survivors of Elder Abuse





# CREATING SHELTER AS PART OF A COORDINATED COMMUNITY RESPONSE

- The Weinberg Center is integrated into the campus of the Hebrew Home at Riverdale, a 600 bed long-term care facility on 32 acres in Riverdale, NY
- Inter-disciplinary team consisting of attorneys and social workers
- Flexible, low-cost model created without bricks and mortar
- Five pillars of our work:
  1. Shelter
  2. Replication
  3. Legal Initiatives
  4. Outreach and Training
  5. Partnerships

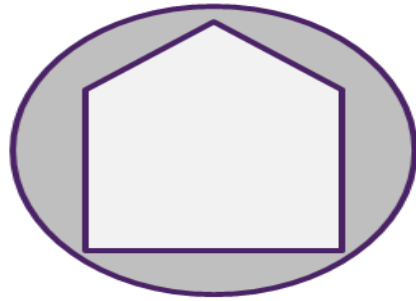




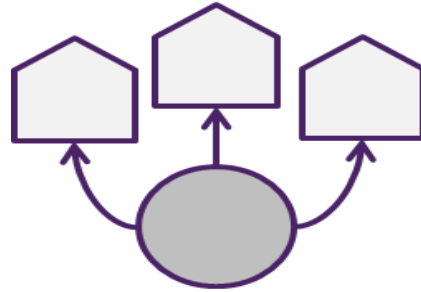
# 5 ELEMENTS NECESSARY FOR SHELTER

1. A Champion
2. Appropriate Housing
3. A Network of Support Services
4. Widespread Awareness
5. Reliable Funding

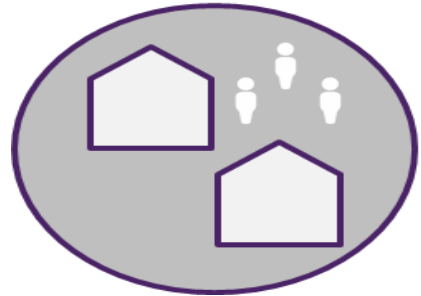




**Model 1:** Shelter program affiliated with a single long-term care facility



**Model 2:** External shelter program that coordinates placement at various housing sites



**Other Models:** Structure based on community needs and resources



# HOW OUR MODEL WORKS

Referral

Admission

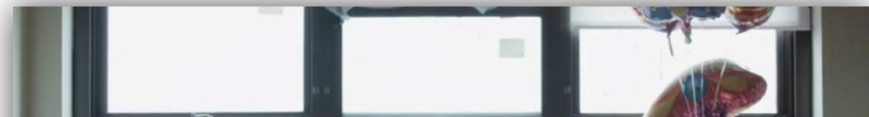
Assessment

Provision of  
Social and  
Legal Services

Discharge to  
Safe Living  
Environment



The Harry and Jeanette  
**Weinberg Center for Elder Justice**  
AT THE HEBREW HOME AT RIVERDALE



# CRITERIA FOR ADMISSION

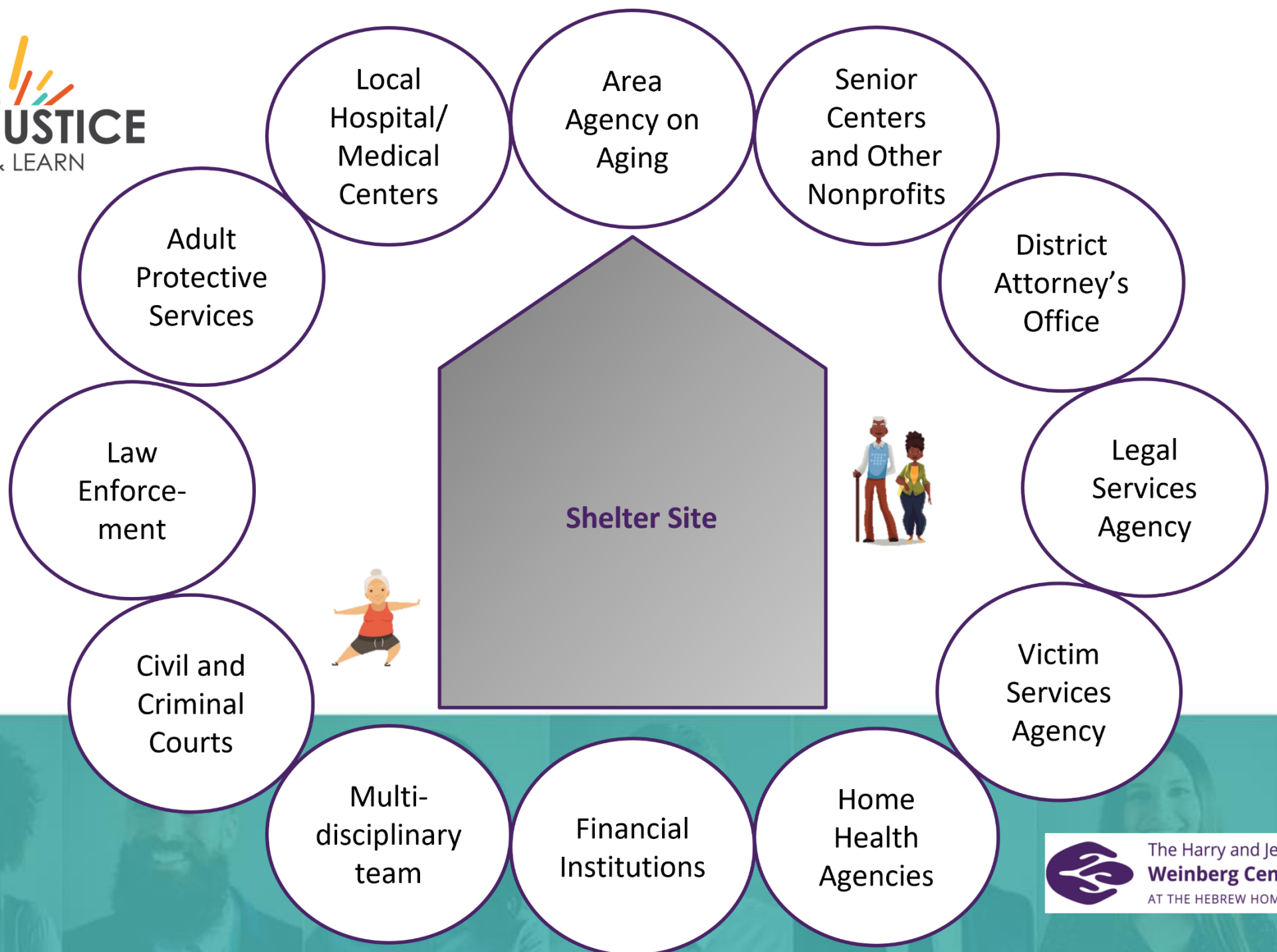
- Older adult must be 60+
- Experiences one or more types of abuse or is at serious risk of abuse
- Professional referral
- In need of temporary shelter and agrees to be placed in facility
- No contact with the person(s) who caused harm



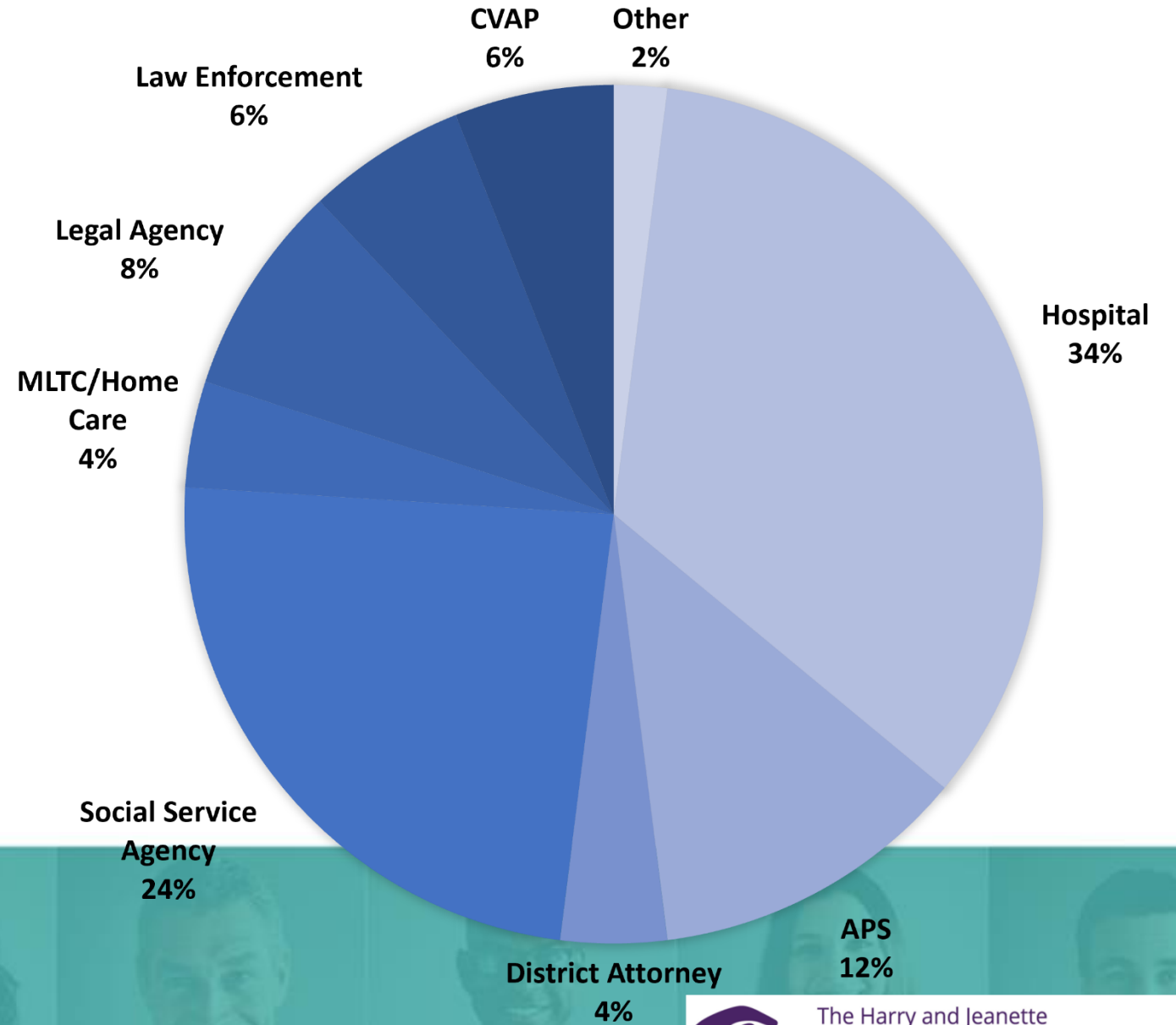
The Harry and Jeanette  
**Weinberg Center for Elder Justice**  
AT THE HEBREW HOME AT RIVERDALE



The Harry and Jeanette  
**Weinberg Center for Elder Justice**  
AT THE HEBREW HOME AT RIVERDALE



# REFERRALS





# PAYMENT SOURCES

- Medicaid/Medicare
- Insurance
- Foundation grants
- City, County, and/or Federal Funding
- Private funders
- Annual fundraiser



## OUR TEAM

Inter-disciplinary team consisting of:

- Attorneys
- Licensed social workers
- Public health specialist
- Case coordinator
- Legal and social service interns



## LEGAL TEAM

- Direct legal services
  - Family Court, Supreme Court, Criminal Court
- Community partnerships and legal consultations
  - Multidisciplinary Teams, Family Justice Center
- Outreach and training with judges, attorneys, and service providers



# FULL INTEGRATION

- Clinical Team
- Security Personnel
- Housekeeping
- Food Services
- Finance Department
- Development Team
- Therapeutic Activities Staff

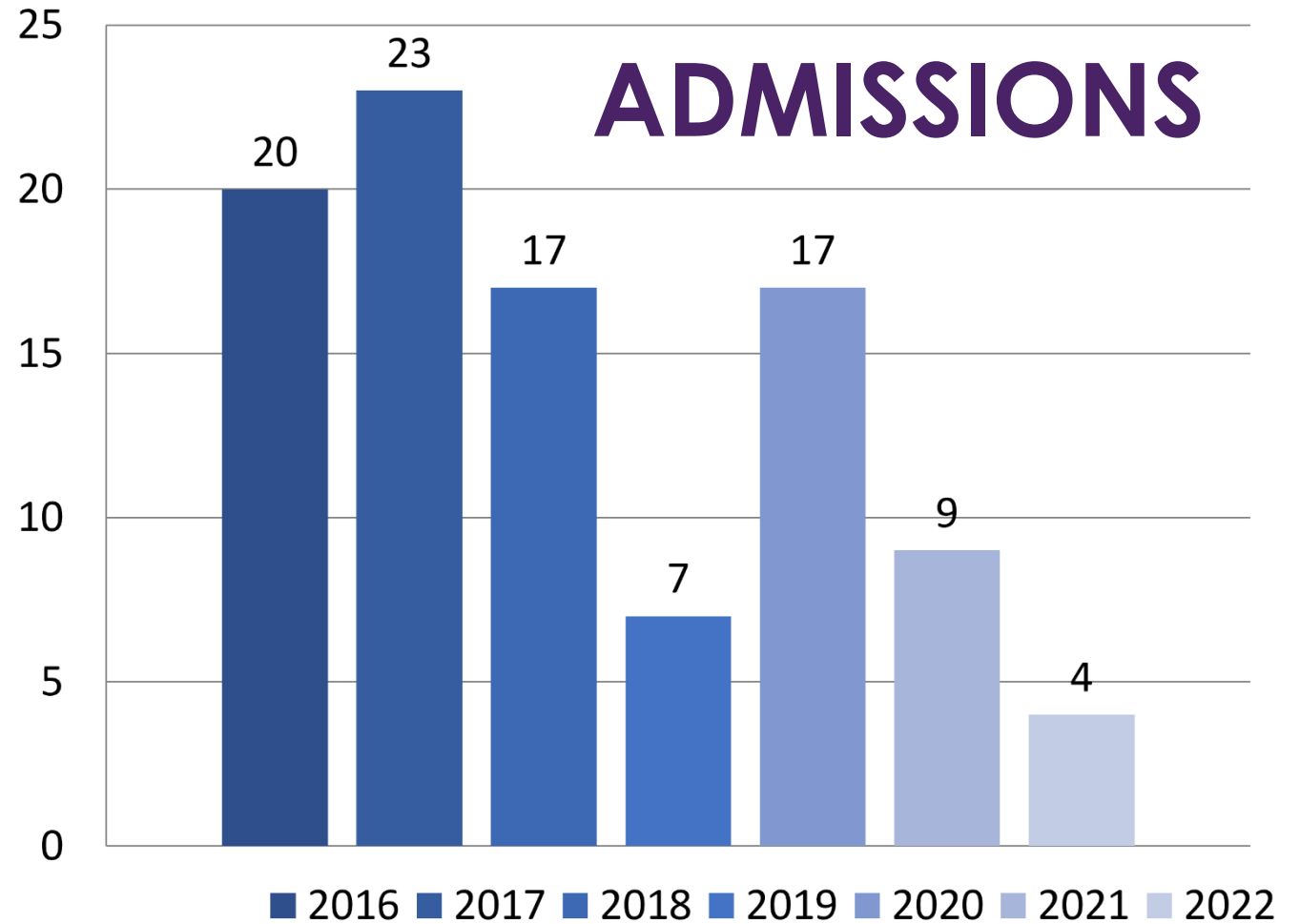


The Harry and Jeanette  
**Weinberg Center for Elder Justice**  
AT THE HEBREW HOME AT RIVERDALE



The Harry and Jeanette  
**Weinberg Center for Elder Justice**  
AT THE HEBREW HOME AT RIVERDALE

**191,406**  
days of shelter





“To create a network of regional elder abuse shelters and other similar service models with close working relationships, shared resources and technical assistance, common standards of excellence and a vibrant community of support.”

**SPRINGALLIANCE.ORG**



We are leaders in a global network of elder abuse shelters





# SHELTER MODEL EVALUATION

“An Initial Evaluation of the Weinberg Center for Elder Justice’s Shelter Model for Elder Mistreatment,” supported by The John A. Hartford Foundation and The Harry and Jeanette Weinberg Foundation





# ADMINISTRATION ON COMMUNITY LIVING: INNOVATION GRANT 2021-2023

The project is one of seven grants made nationwide to assess and understand the various community services that produce better outcomes for individuals transitioning from short-term APS interventions to the broader community based services and programs that remediate and prevent recurrence of abuse over the longer term.

To achieve this goal, the Weinberg Center, together with NYC and Westchester County APS, will partner with five elder shelter programs around the country to conduct a pilot program evaluation of the shelter intervention and its success in assisting APS-involved clients across a variety of diverse communities. The five partner programs are:

Center for Elder Law & Justice (Buffalo, NY)

Jewish Home of Central New York (Syracuse, NY)

Eliza Bryant Village (Cleveland, OH)

The Pikes Peak Elder Justice Center (Colorado Springs, CO)

Hooverwood Living (Indianapolis, IN)



# CONTACT:



## **Joy Solomon, Esq.**

Vice President, Elder Justice and Spiritual Engagement  
Director and Managing Attorney  
The Weinberg Center

[joy.solomon@hebrewhome.org](mailto:joy.solomon@hebrewhome.org)



# Q&A DISCUSSION



Type in your question or comment



Connect with speakers and other participants using the chat



The logo features a stylized sunburst or fan shape composed of several vertical lines of varying lengths and colors, including orange, yellow, grey, and teal.

**ELDER JUSTICE**  
LUNCH & LEARN

**Thank you!**

